

QA Studio Program Updates

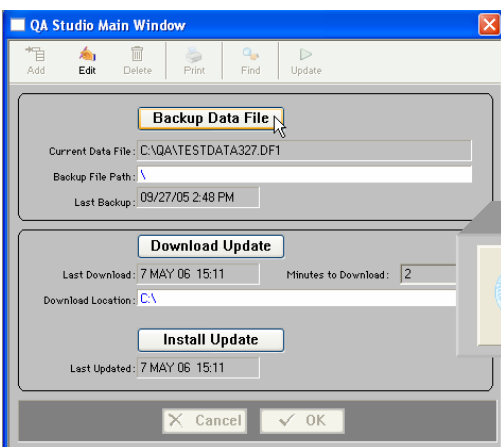
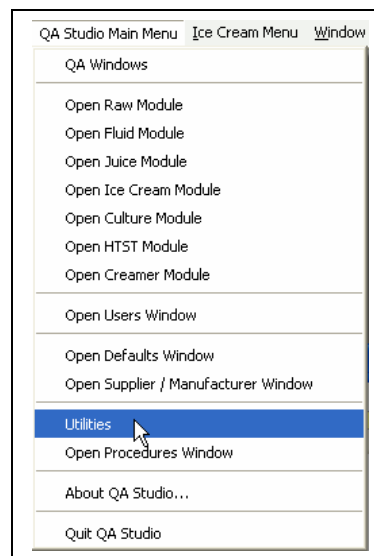
Updates can be accessed by two different methods depending on the ftp access available at your facility. When QA Studio is set up at your facility it will be determined which way the updates will be performed.

For the first method; the update can be performed within QA Studio. From the QA Studio Main Menu go to Utilities;

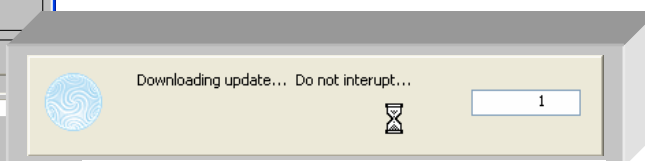
Click Backup Data File. (Before updating, backing up the data is not mandatory but a good idea).

All QA Studio users will need to be out of the program for the back-up process. After a successful back-up; click Download Update (the program will be obtained from a ftp site, ftp access is necessary for this step to be successful. If ftp access is not available, you will need to perform updates by the second method described).

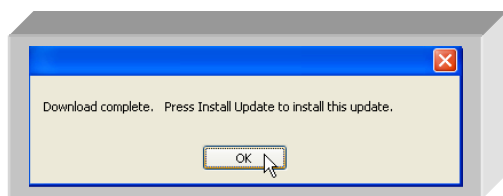
After a successful download, click Install Update.



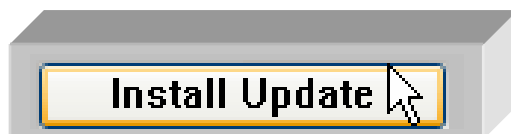
During the Download process should see the following box:



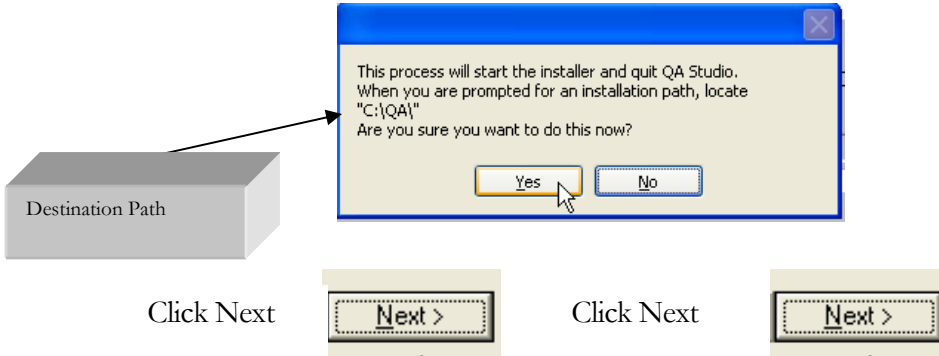
After successful download process should see the following box



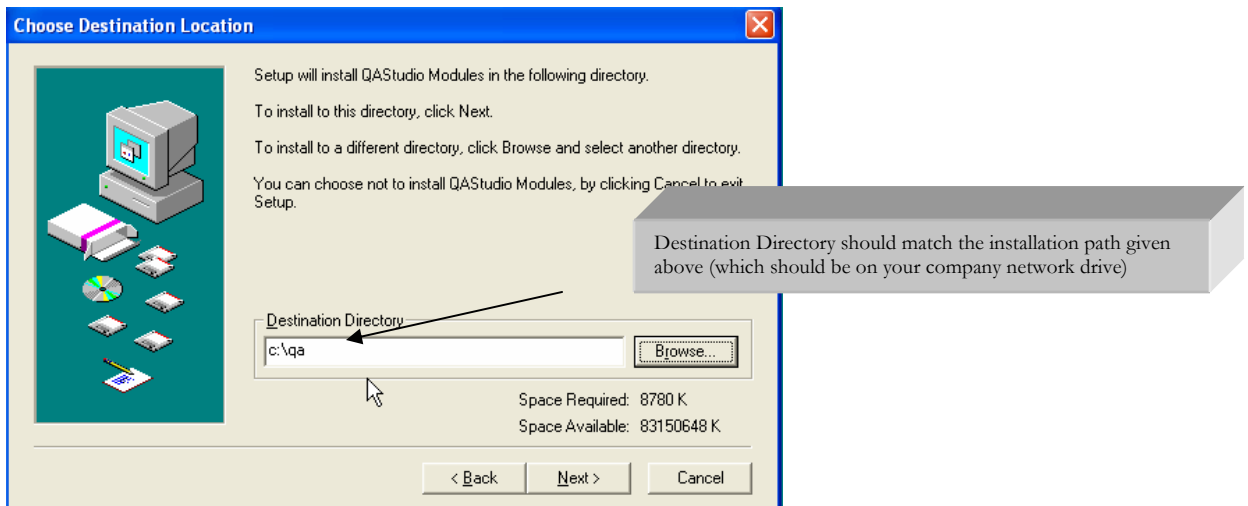
Once the download is complete, the update has been successfully put on the *C drive* of the computer performing the download. The next step is to Install the program, and directing QA Studio to the correct network drive to properly run all connecting computers.



Installing the Update: It is important that all users are out of the program, a box will pop up reminding you of this fact. As you continue, another box will pop up to inform you of the Destination Drive for QA Studio installation. In the example below, QA Studio is only being run on one computer and is not on a network drive. Typically at this point you would see a network drive and file for QA Studio.



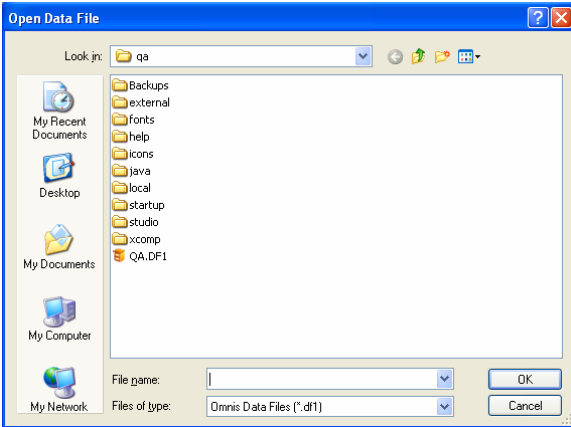
Destination Directory: It is very important for QA Studio to be installed on the correct drive. QA Studio is typically setup on a network drive assigned by your IT department. When you get to this screen, *Click the browse button and find the correct drive (your company assigned network drive) and the correct file for QA Studio.* **QA Studio must be directed to the correct drive and file to run correctly.**



After QA Studio is installed the program will close. To open QA Studio and begin using the new version, double click and open from QA Studio icon on the desktop.



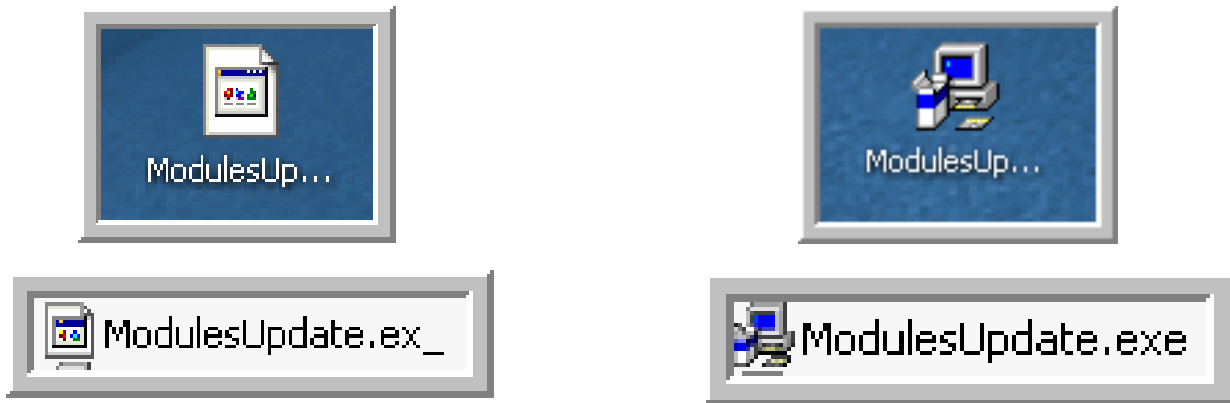
Need to direct QA Studio to your data file: Need to direct QA Studio program to the correct data file (which contains your company's unique data information). Locate the assigned company network drive and find the company QA file. Then look for the .DF1 (extension) which appears as a file cabinet. Click on the .DF1 file cabinet and click OK.



QA Studio will now have all the latest features.:

For the second method; the update will be emailed to your facility as an attachment. The attachment will be named; ModulesUpdate.ex_. The file will need to be saved to your computer either in the QA folder, My Documents or on the Desktop. The file must then be renamed to Modules Update.exe. You will only have to change the last character from a _ to an e. Note: if you save to your desktop the settings may not show the extension and will be more difficult to rename with the correct extension, if that is the case you can save to My Documents instead where you can clearly see the extension.

Please see below:



The Modules Update; must have the appearance in the example on the left. Once it has the correct extension (.exe) then double click on the icon to run the Modules update program. Please refer to **Installing the Update** as described above on prior page.