

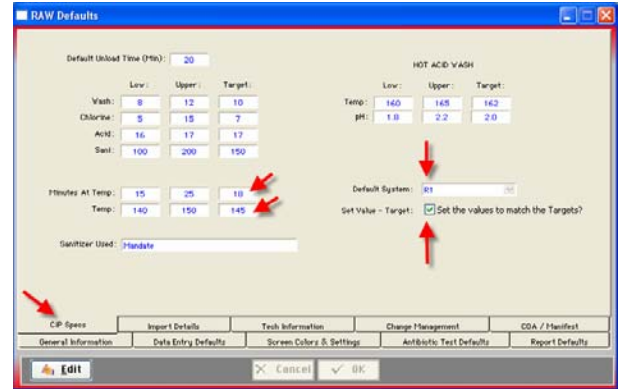


QA Studio

Raw Program – CIP Information

Auto-Fill items on CIP Tab:

- In the Raw Program menu > Raw Defaults > CIP Specs Tab: You can now enter the Default CIP System (from the Raw Support Lists > CIP Unit). You can also select to auto-fill the TARGET “Minutes at Temperature” and the “Temperature”.

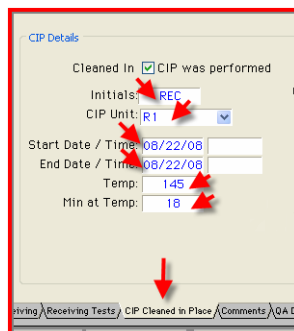


- If you set up the Default System and the TARGET values to auto-fill, when entering data into the Raw main window and you click “CIP to be performed” several fields will auto fill.



- On the CIP Tab the following will automatically be filled in:
 1. The “CIP was performed”
 2. Initials (will take initials from the REC initials on the Receiving Tab).
 3. CIP Unit
 4. The Start and End Date (from the unload date on Receiving Tab).
 5. The TARGET Temperature.
 6. The TARGET Minutes at Temperature.

The Start time and the End time will need to be entered by the person performing the CIP.



- If the temperature reached is different than the TARGET or the minutes at temperature is different than the TARGET then the entry can be changed to the actual temperature and minutes at temperature in the Raw main window on the CIP tab. Enter the temperature or the minutes at temperature and click OK to save the change.

