

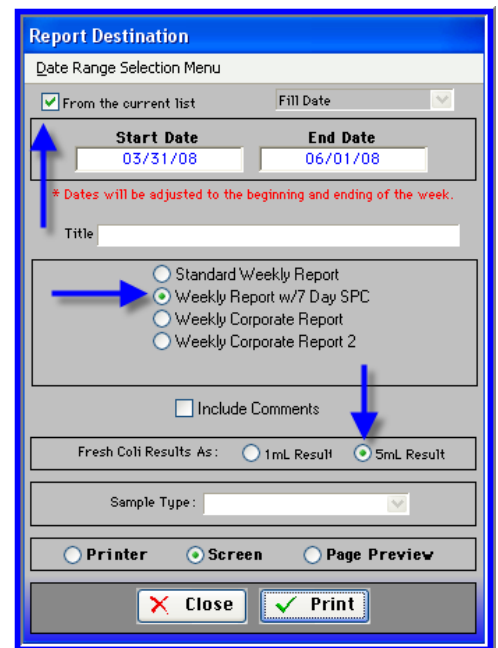
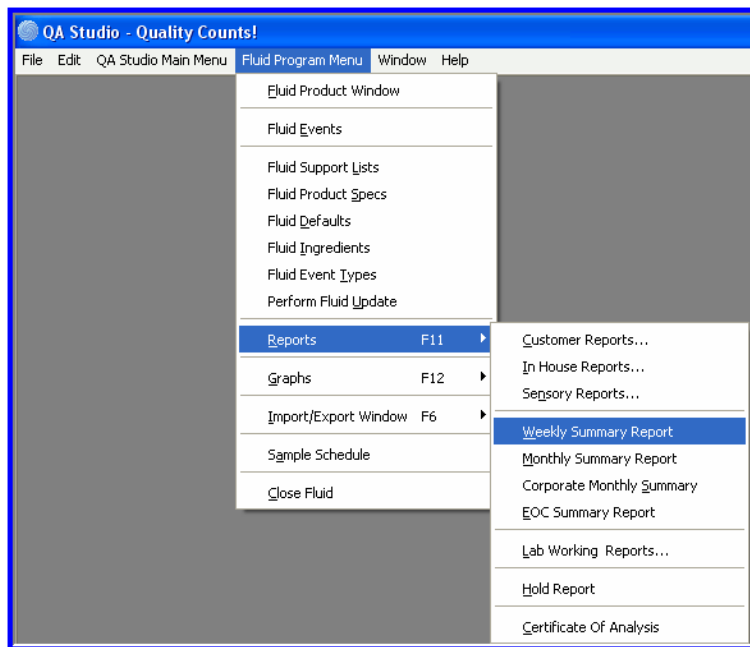


# QA Studio

## Fluid Milk Reports – Weekly Summary

Reports for Fluid Products:

- FIND the data in the Fluid main window. Click FIND: “Search on” Fill Date; then enter the start date (for example 4-1-08) and enter the end date (example 6-1-08) and choose any other criteria that you would like, click OK. May also use the Quick Dates (Last Month or Last Week) when in the FIND mode. (If you use the FIND in the Fluid main window you *may be obtaining a partial week* if the FIND doesn’t start on the first day of the week you have set up in the defaults).
- **Or** Enter the Date Range in the Weekly “Report Destination” window. For example enter 4-1-08 to 6-1-08. If you enter the date in the “Report Destination” window the report will be *adjusted to give you the full week* if you selected a date that was in the middle of the week).
- Go to Fluid Program Menu > Reports > Weekly Summary Report > From the Current List > Weekly Report w/7 Day SPC.





# QA Studio

- This report includes a summary by week of the following tests: Fresh coli, Stress Coli, 7Day SPC and End of Code Flavor.
- This report can be viewed, printed or emailed as necessary.

FLUID R WEEKLY 7DAY									
<p>To: Corporate QA, Plant Manager            From: Plant QA Manager            Date: Monday July 7, 2008            Subject: Quality Summary            CC: Posted</p>									
FLUID PRODUCT REPORT				<b>QAStudio</b>			Fill Date		Page: 1
Printed Mon, Jul 7, 2008 @ 11:43				Weekly Summary Report			04/20/08 00:00 thru 04/19/08 23:59		
WEEK	5 mL FRESH COLIFORM		STRESS COLIFORM		7 DAY SPC		END OF CODE		
	Fail / Total	% Fail	Fail / Total	% Fail	Fail / Total	% Fail	Fail / Total	% Fail	
03/31/08 thru 04/06/08	3/5	60.0%	0/5	0.0%	1/5	20.0%	1/3	33.3%	
04/14/08 thru 04/20/08	2/22	9.1%	2/25	8.0%	1/18	5.6%	1/18	5.6%	
04/21/08 thru 04/27/08	1/33	3.0%	0/36	0.0%	4/31	12.9%	4/28	14.3%	
04/28/08 thru 05/04/08	0/2	0.0%	1/6	16.7%	3/17	17.6%	1/5	20.0%	
05/05/08 thru 05/11/08	1/11	9.1%	0/0	-	0/0	-	0/0	-	
<b>Report Totals</b>	<b>7/73</b>	<b>9.6%</b>	<b>3/72</b>	<b>4.2%</b>	<b>9/71</b>	<b>12.7%</b>	<b>7/54</b>	<b>13.0%</b>	
<b>Comments Section</b>									

- Go to Fluid In-house reports > Report Set 3 > General Report 3 to match the details and to see the same data by tank, filler or product.

FP	%AW	Phos	%BF	%SNF	%TS	5 mL			7 Day SPC	EOC Flavor
						Fresh Coli	Stress Coli	7 Day SPC		
		0/2	0/2	0/25	13/22	14/25	7/73	3/72	9/71	7/54
		0.0%	0.0%	0.0%	59.1%	56.0%	9.6%	4.2%	12.7%	13.0%

End of Report: 109 records in report.  
 Percentage Fails:

A.A. Schermerhorn 7-7-08

Supersedes: None