



QA Studio: Fluid Program- Dates

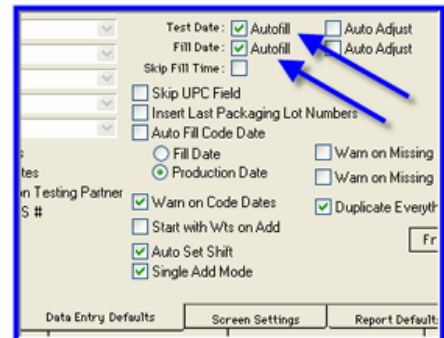
When processing dairy products, there are several dates that are important in tracking and monitoring the product.

In QA Studio, you have the ability to distinguish products by the date when it was processed, packaged, tested and entered into the program.

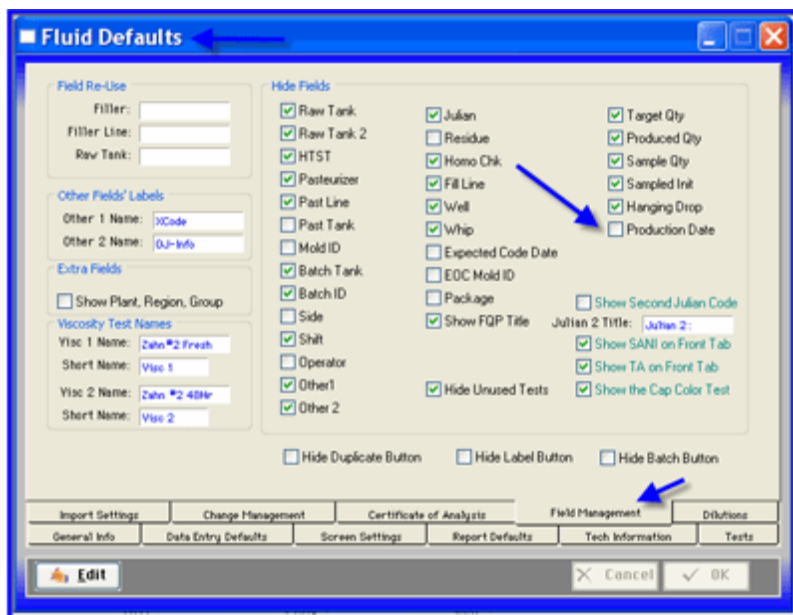
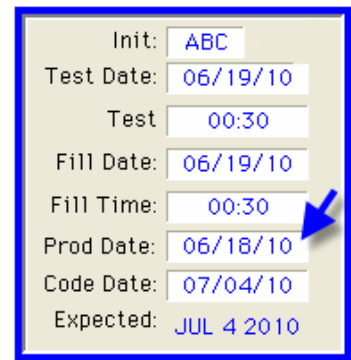
- **Fill Date:** The date the product was packaged on the filler. This may be helpful to see the order of products packaged.
- **Test Date:** The date the product was initially tested. Finding on Test Date may be helpful when counting plates.
- **Entered Date:** This date corresponds to when the sample is entered into the program. This date is logged automatically in the background. The Entered Date can be very useful in finding data incase a Fill Date or other date was entered incorrectly.
- **Production Date:** The date the order was made for the product to be produced. If you are tracking a certain batch of product it may be helpful to search on Production Dates.

In some cases, it is possible for all these dates to be different. QA Studio makes it easy to enter and track all these dates easily.

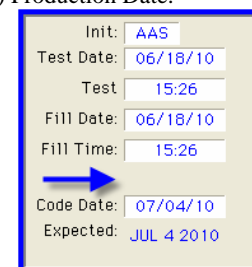
Auto-fill Test Date and Fill Date: Go to Fluid Program Menu > Fluid Defaults > Data Entry Defaults > click Auto fill Test Date and Fill Date. When a sample is added in the main Fluid Product Window, the Test Date and Fill Date will auto fill to the current date. If you select to use the Production Date field, it will auto fill to the same date as the Fill Date. All dates can be changed if needed when entering data in the main Fluid Product Window.

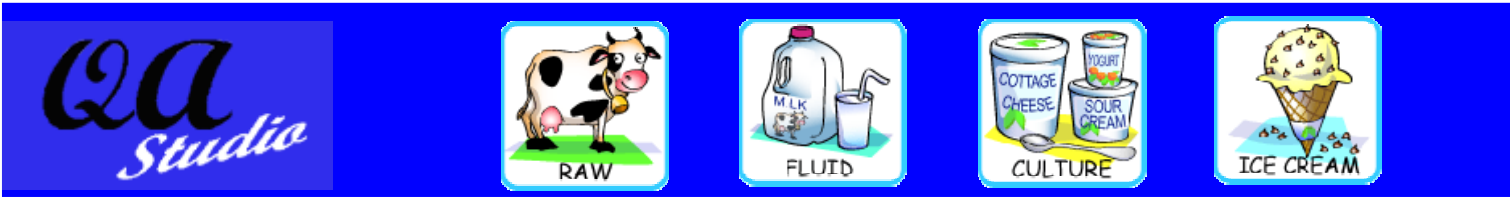


Production Date: New to QA Studio is the Production Date field. This field may be useful for matching a product with the production date (the date it was scheduled to be produced). For example; there is an order for chocolate milk for the production date of 6-18-10. The chocolate milk is processed late in the day and is packaged after midnight. The Fill Date would then be 6-19-10 but the Production Date would be 6-18-10. The Expected Code Date can be set up to either be based on the Fill Date OR the Production Date.



Hide or Show Production Date: QA Studio allows you to use the Production Date or not. Each facility can determine if they would like to use this field. If you would like to hide the Production Date > Fluid Program Menu > Fluid Defaults > Field Management tab > check (to hide) Production Date.





QA Studio: Fluid Program- Dates

Expected Code Date: QA Studio will calculate the Expected Code Date. Select if the expected Code Date is determined by the Fill Date or the Production Date (if the field is not hidden). There are two areas that relate to the Expected Code Date. One is in the Fluid Product Specifications window on the Specs tab. The other is on the Weights tab in the Weights window.

The first and main place for the Expected Code Date > Fluid Program Menu > Fluid Product Specs > Specs tab. Highlight (select) a product > enter the number of Expected Code Days.

Fluid Product Specifications Window

Product	Brand	Code	Category	Base	Code D
Drink	In-house		Drinks		0
Drink	MilkyWay		Drinks		60
EggNog	ACMEFarm		Dairy	EggNog	20
FatFree	ABCDairy	2323	Dairy	FF	16
FatFree	In-house		Dairy	FF	0
FatFree	Inhouse	2323	Dairy	FF	16
FatFree	MilkyWay	8888	Dairy	FF	16
H&H	ABCDairy	7777	Dairy	H&H	18
Homo	ABCDairy	8765	Dairy	FedHomo	16
Homo	In-house		Dairy	FedHomo	0
Homo	MilkyWay	12345	Dairy	FedHomo	16
Org.2%	123Milk	9200	Dairy	88767	18

Product: Homo
 Brand: ABCDairy
 Product Code: 8765
 Base: FedHomo
 Full Name: Homogenized Whole Milk
 Category: Dairy

COA #: 0
 Code Days/Months: 16
 Days After EDC: 5
 Extended Test Days: 0

Length of Code Date in Weights Window: If typically all the products are a certain code date, that code should be entered on the first Specs tab in the Product Specs Window. If a certain SIZE has a different code date, that can be entered in the Weights Update Screen. Add or select the specific size from the list as seen below. Enter the Code Days in the Weights Update Screen. If you leave this field blank the Code Days will default to the code on the front Specs tab.

Weights Update Screen

Product: Homo Brand: ABCDairy

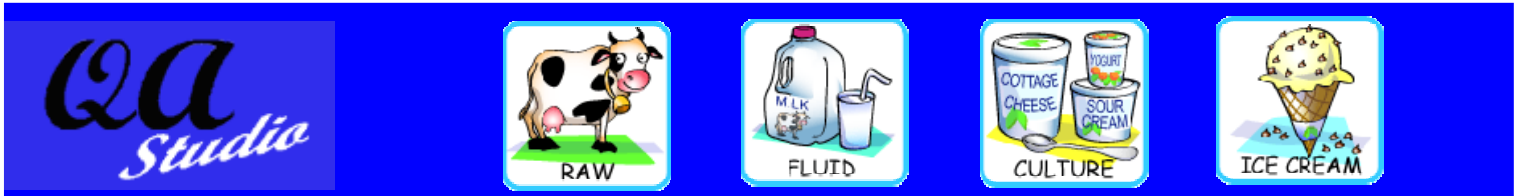
Size	Container	Full Name
1/2 GAL	PAPER	ABC Dairy HVD HG Paper
GAL	PLASTIC	ABC Dairy HVD Plastic Gallon
PINT	PAPER	ABC Dairy HVD Paper PT
QUART	PAPER	ABC Dairy HVD Paper QT
PINT	PLASTIC	ABC Dairy HVD Plastic PT
1/2 GAL	PLASTIC	ABC Dairy HVD Plastic HG

Container: PLASTIC
 Size: PINT
 Full Name: ABC Dairy HVD Plastic PT
 Tare: 26.5
 Net Low: 489
 Net Target: 490
 Net High: 491
 Code Days: 16
 Code Months: 0
 Package Qty: 0
 Pulp Lower:
 Pulp Upper:

UPC Code: 145678915678
 Code: 5678
 Default Filler: FED1
 Default Sample Type:
 XCode:
 OJ-Info:
 Lid Manufacturer: LidCo.ABC
 Last Lid Lot #:
 Container Manufacturer: PlasticJugsCo.
 Last Container Lot #:
 Lid Color:
 Old UPC:

Weight Details: Additional UPC Codes

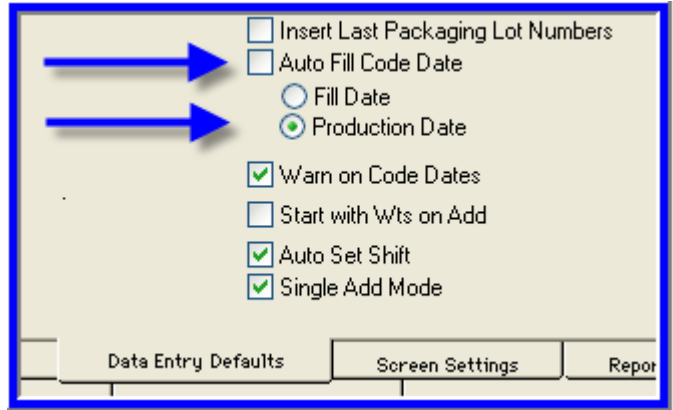
Buttons: Cancel, OK



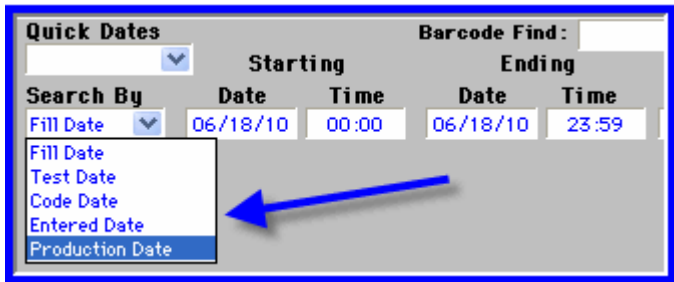
QA Studio: Fluid Program- Dates

Code Date Determined from Production Date OR

Fill Date: Select the Production Date or Fill Date depending on which date you would like the Expected Code Date calculated on. Only click Auto Fill Code Date IF you want QA Studio to auto fill the Code Date. If you do not select this, the QA Studio user entering the data will need to enter and confirm the correct code date. You will still have the Expected Code Date either way.



Find on Dates: To find samples for a certain date range > click Find when in the Fluid Product Window. Then select the Search By date. Select which type of date and other criteria. Then click OK or press the enter key.



Reports: If you select a specific Search By date, such as Production Date, the data can be reported by selecting From the Current List (while in the pop up Print box). Then typically, reports are first sorted by a specific criterion such as tank, filler or product. Secondly, there is an inner sort which is typically by FILL DATE and FILL TIME.

Benefit to QA Studio User: Additional date selection allows you to view, graph and report results by Production Date.

Workshops by



Authorized Dealer of QA Studio

Implementing SQF 2000 Systems
DATE: August 17-18, 2010

HACCP Workshop
DATE: September 13-15, 2010

Implementing SQF 2000 Systems
DATE: September 15-17, 2010

Dairy Technology Workshop
DATE: September 27-30, 2010

Sanitation Workshop
DATE: October 20-22, 2010

Pasteurization Workshop
DATE: December 13-16, 2010