



QA Studio: Datafile with 10 times the Current Capacity

September 2009

QA Studio stores your data in a very efficient manner. Eventually, though the datafile will become full at some point. Once the datafile is full, a back-up is performed and some of the data is purged from the current working datafile. If needed, the data can be retrieved from the special back-up file.

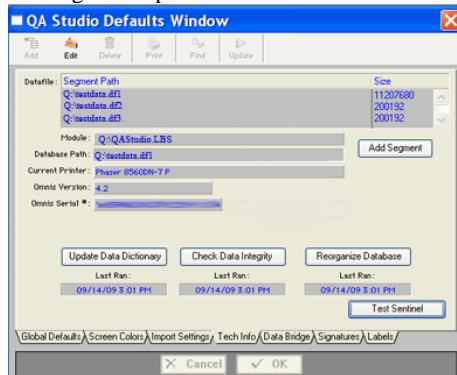
New in QA Studio, you have the ability to easily keep on adding more data to the datafile. QA Studio now holds 10 times the data!

If you are alerted (within QA Studio) that your datafile is 80%-100% full, please contact QA Studio support. The following options will be reviewed;

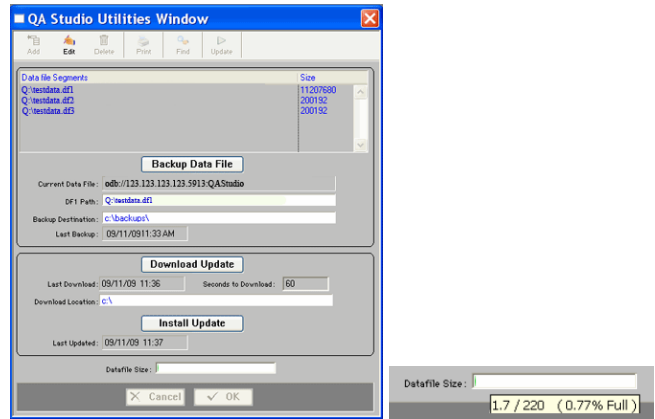
- Make a special manual back-up of the datafile and store on computer to be accessible if needed in the future and purge some data, OR
- **New:** Make a manual back-up and add another segment to your datafile and keep on adding more data. *Up to 9 more segments can be added. New segments mean you can access all data (including older data) easily without having to retrieve it from the special manual back-up.*

In all cases, a manual back-up is performed before installing updates and before making major changes to the datafile. After backing-up, obtaining the update and installing the update, the following changes will be seen in the program:

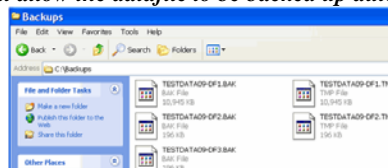
1: In the QA Studio Main Menu > Defaults window: There is now a button **Add Segment**. This should only be clicked if you have seen a QA Studio alert box that the datafile is 80% or more full and QA Studio support has been contacted. QA Studio will perform this set up with you and will provide the special password to continue the process. One segment will be added at a time, each time the datafile becomes full. 9 more segments can be added, making 10 segments. Once another segment is set up, there will be no notice a difference in running the program or making back-ups.



2: In the QA Studio Main Menu > Utilities Window > the additional segments can be seen. In this one area, there is also a datafile size indicator bar at the bottom of the window. The bar has a green indicator scale that corresponds to the size of the datafile. Hover over the green bar and information on how full the datafile is currently can be seen. If a new segment is added, the green bars will be significantly reduced since there will be more datafile storage available.



3: Back-ups. The new datafile segments are set up in the same path as the main datafile (with help from QA Studio support). The back-ups will be performed as they were before with no noticeable difference. Manually click the back-up button and all segments will be backed up. Also, if you are set up on the Omnis Data Bridge and the bridge is connected, the back-ups should be performed when the network drive is being backed up. To check if you are on the Omnis Data Bridge > please go to QA Studio Main Menu > Utilities window > check the Current Datafile location. If the first three letters are odb and there are several numbers following the odb, then you are on the Omnis Data Bridge. It is highly recommended if you are not, that you contact QA Studio support at your convenience and we will work with the IT person or Network Administrator at your facility to get the odb connection set up. **The odb – Omnis Data Bridge will allow the datafile to be backed up automatically when your network drive is backed up.**



Spotlight Feature: To limit access to the above windows: In QA Studio Main Menu > Open Users Window > Select a User > make sure the user is unchecked for Utilities Access Granted. And in Users Window > Click Access > Open the Access Rights window for that particular user > select the program > For Defaults: select None and that particular user will not have access to the defaults.

Please feel free to contact QA Studio support if you have any questions.