



QA Studio: Interface with Other Databases

November 2009



Spotlight Feature: QA Studio can interface with other databases within the company. This feature can improve efficiency and accuracy of product information and testing results for more thorough traceability throughout the process. Such areas where interfacing with data in QA Studio may be valuable:

- A Corporate Database
- Lab Testing Equipment
- An Accounting Program

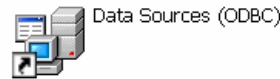
QA Studio is specifically designed for the receiving areas and quality assurance department to efficiently enter product information and testing results at the *testing level*. QA Studio features include; scanning finished product UPC barcodes to enter product information into database, and interfacing with laboratory equipment to import test results efficiently and accurately. Data entered easily into QA Studio can then interface with other programs and databases at the plant as needed. There are different ways to set up security to allow only authorized personnel to view and work with the data within QA Studio.

There are ways data from QA Studio can be imported from other programs such as a program in raw receiving. Data can be imported into QA Studio from other programs and data from QA Studio can be exported to other programs.

- ODBC access
- DDE Interface
- ASC-II text imports / exports
- XML imports / exports
- Others as needed

In some instances: QA Studio support may need to speak with the computer programmer or support person of the program used at the facility to determine the best way to interface the data.

ODBC stands for Open Data Base Connectivity

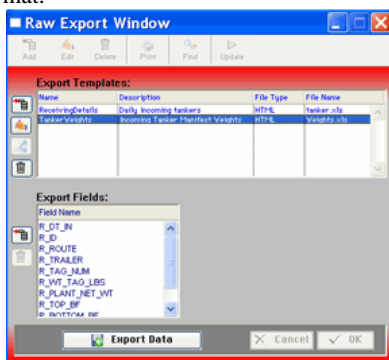


ODBC is a simple interface technique available on MS Windows that allows programs to interface with almost an unlimited number of data sources and formats.

A connection is set up on the computer and QA Studio can connect to an outside database to gather information and/or other programs can access the QA Studio database (read-only) via ODBC.

ASCII Text import and export:

An example of this is the export feature that is used in QA Studio. You can select data from QA Studio and set up a template and export data to Excel or other format.



DDE stands for Dynamic Data Exchange

DDE is a form of inter process communication that uses shared memory to exchange data between applications. A DDE with laboratory test equipment enables the program to be real-time updated with results from the testing equipment.

XML stands for Extensible Markup Language

XML is a file type that can be opened using a web browser and the data within the file is defined so it can be used as a database. The format labels the data.

Others as Needed: QA Studio supports all the leading databases, including Oracle, Sybase, DB2, and My SQL as well as JDBC and ODBC, so you can connect to virtually any data source and transfer data from one to another. *Please check with QA Studio if you have questions on how to interface with another database.*

Benefit to QA Studio User: QA Studio can interface with other databases to *improve efficiency*.

Workshops offered by Randolph Associates, Inc.

Implementing SQF 2000 Systems
DATE: January 27 - 28, 2010

Workshops offered by Randolph Associates, Inc.

Dairy Technology Workshop
DATE: February 8 - 11, 2010