



May 2009

QA Studio Raw Program: Certificate of Analysis - COAs

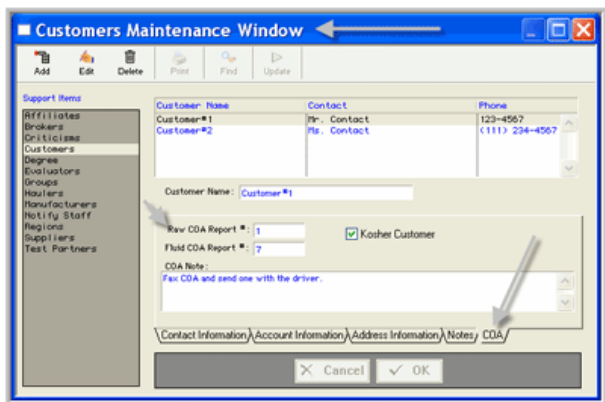
A Certificate of Analysis may be easily generated in QA Studio. For example, if you are loading out cream, a COA can be generated and printed, or emailed to the customer.

COAs in the RAW Program: To print a COA in the Raw Program > In the Raw Main Window > Find the data for the COA. You can right click in the Raw Main Window and highlight the record for the COA and select "Keep only". Go to Raw Program Menu > Raw Reports > COA > Select the corresponding COA (or set up a COA by Customer and it will automatically be selected) and print.

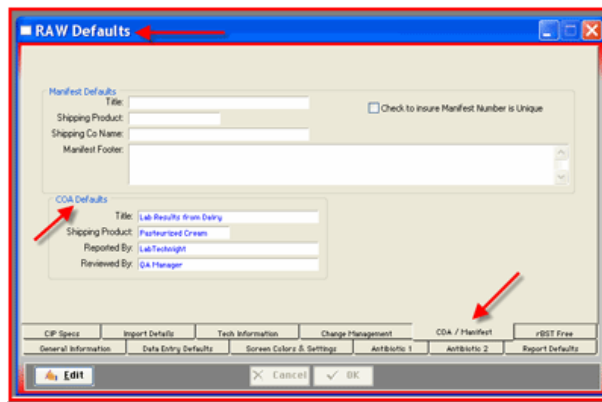
The following items can be set up one time to make printing COAs fast and efficient:

Set up COA to Customer: Go to QA Studio Main Menu > Other Support Items > Highlight Customer > Enter the Customer information that will be receiving the COA. Go to the COA tab and select the corresponding COA you would like to print. After this is set up, while printing a COA in the Raw program, you select the customer and the corresponding COA will *automatically* be selected for you. (As always, you have the ability to override the default and select another COA if desired).

QA Studio Main Menu > Other Support Items Window > Highlight Customers > Set up Customer information and corresponding COA on COA tab.



Raw Program Menu > Raw Defaults Window > COA tab > Set up default Title, Product, Reported By, and Reviewed By information to be on COA if desired.



Set Up for Other COA Items:

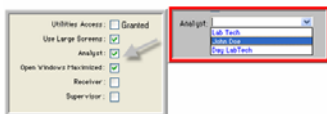
Raw Products Specs Window > Click on the product > Enter the name how you would like it to appear on the Raw COA.



For this example, the "Ship Desc:" was entered as "Heat Treated Cream". See below how it is displayed on the COA.



QA Studio Main Menu > Open Users Window > Set up which users are Analysts. When in the Certificate of Analysis Report Window > their name will be available from a drop down list to select for the COA.



Here is an example of Raw COA #3:

