



QA Studio: Sample Barcode Labels

July 2009

Items needed to print barcode labels:

- TLP 2844-Z Label Printer (Zebra)
- BarTender Enterprise Edition w/Commander (Seagull Scientific)
- Labels (Zebra)

Items can be purchased directly from the manufacturer or through QA Studio.



09/04 00:00 - R009 - RAW



BarTender is installed on the computer that that has the Zebra TLP 2844-Z installed.

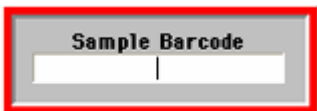
Any QA Studio workstation can generate labels. The Enterprise Edition supports unlimited users for up to 3 label printers.

Administrator rights are needed when installing BarTender.

BarTender Software has a free download which can be used for 30 days. You can try it out before deciding to purchase. (You will need a label printer). Please see link below.

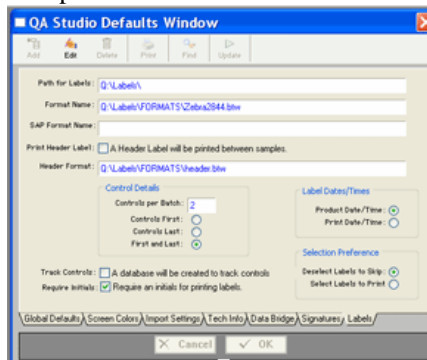
http://www.seagullscientific.com/asp/btw_down.aspx

When reading Petrifilm with the barcode labels, you can use the Find on Barcode feature or if you have a 3M Petrifilm Plate Reader you can import the results into QA Studio.



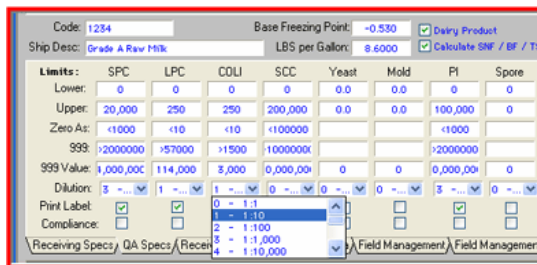
Set Up in QA Studio Main Menu > Defaults > Labels

- The path for the labels
- If the labels have a header (a header can easily separate sample labels or can be used for the EOC flavoring sample).
- To print controls and how many
- To require initials or not
- The label date and time
- Print preferences



Set Up in Raw Program Menu > Defaults

- Select the dilution for the test
- Select to Print label or not



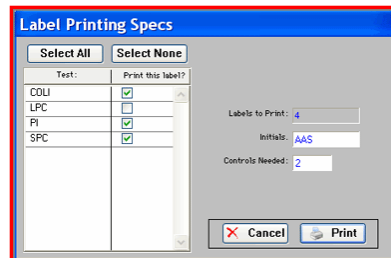
Specifications seen above are for demonstration purposes only. Each facility enters their specifications.

Raw Program Main Window > Print

- Highlight samples that need a barcode
- Click labels at bottom of the window



The Label Printing Specs window will appear and will default to what you have set up in the QA Studio Main Defaults, you can change if needed.



There are additional files obtained through QA Studio that are needed to print the barcodes. Please contact QA Studio.