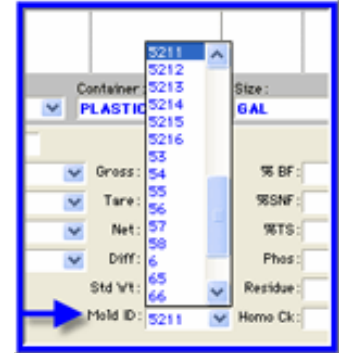




January 2009

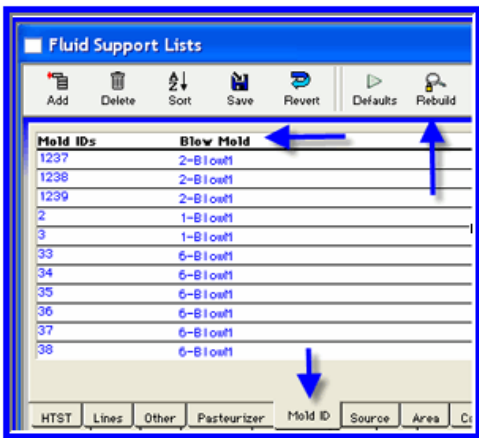
## Fluid Program - Container Mold ID and Blow Mold

**Mold ID:** The Mold ID field located on the first tab in the Fluid main window can be used with the weight fields. You can enter in the Mold ID number from the container to identify the mold that was used to form the particular container used for the weight check. Associating the Mold ID along with the weight may help address weight issues. Previously, the Mold ID field was a free form data entry field. Now the Mold ID field uses a drop down list from Mold ID numbers set up in the Fluid Support Lists. Go to > Fluid Support List > Mold ID tab > Click "Rebuild". This will automatically enter any Mold ID numbers in the program into the Mold ID support list. After the Mold ID support list "Rebuild" is complete, you have the ability to enter the corresponding Blow Mold machine for each Mold ID. If you enter this information you will have the option to view, graph or report the Blow Mold information.

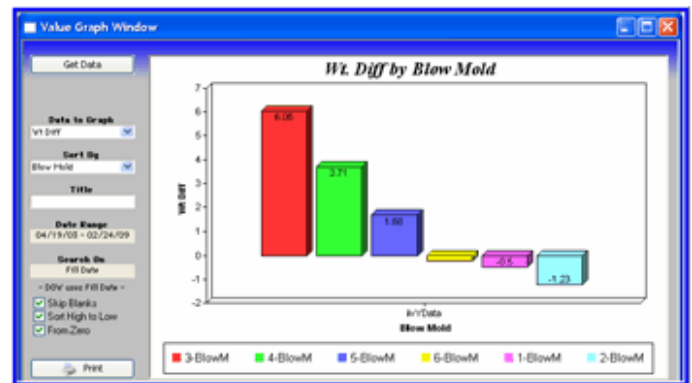
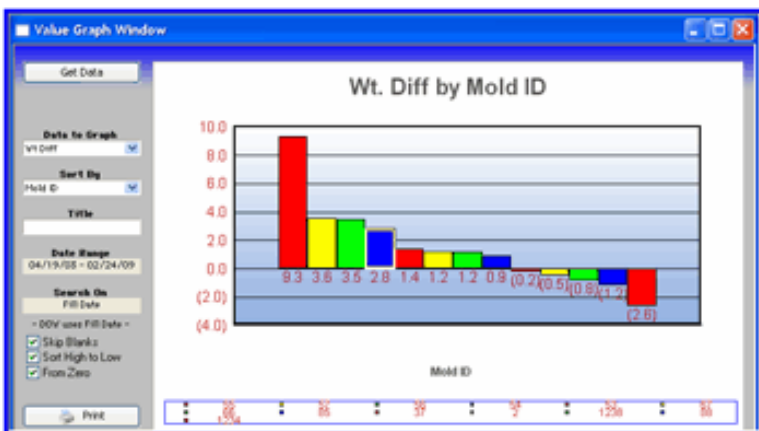


Once the Mold ID numbers and Blow Molds are entered into the Fluid Support List;

- To view: In the Fluid main window select the "Weights List" view.
- To report: Select Data > Go to the Fluid In-house Reports > Report Set 4 > Blow Mold Report.
- To graph: Select Data > Go to the Fluid Graphs > Select either Value Graph or Value Graph 2 > Select Data to graph: Wt. Diff > Select Sort by: either Mold ID or Blow Mold.



Tare	Net	Std Wt	Diff	Mold ID	Blow Mold
65.0	3923.0	3977	11.0	54	4-BlowM
65.0	3915.0	3977	3.0	54	4-BlowM
65.0	3912.0	3977	0.0	54	4-BlowM
65.0	3912.0	3977	0.0	54	4-BlowM
50.0	2030.0	2074	6.0	54	4-BlowM

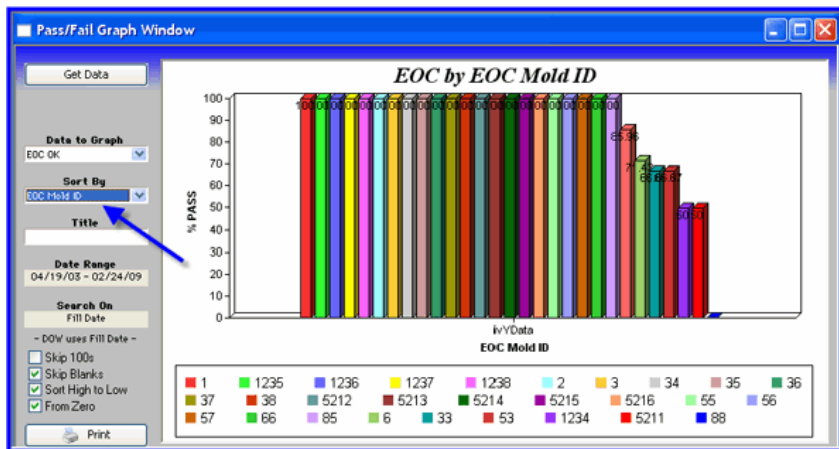




January 2009

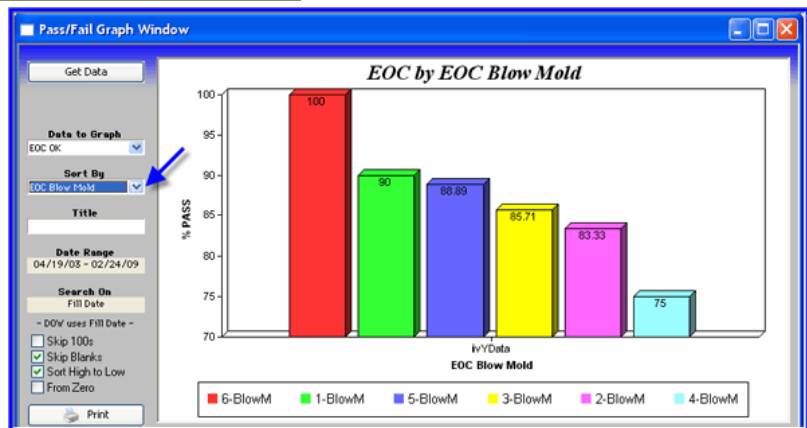
## Fluid Program - Container EOC Mold ID and EOC Blow Mold

- EOC Mold ID:** The EOC Mold ID field located on the QA Data tab in the Fluid main window can be used to associate the EOC Mold ID with the EOC (End of Code) Flavor fields. When flavoring a sample for end of code flavor, you can enter in the EOC Mold ID number. To view the EOC Mold ID and EOC Blow Mold information > Select view: QA View #2 (which also has the EOC details).



When graphing the EOC Mold ID > Select Pass/Fail Graph or Pass/Fail Graph 2 > Select Data to Graph: "EOC OK" or "EOC Flavor" > Select Sort by: "EOC Mold ID" to see the individual Mold ID.

When graphing the EOC Blow Mold > Select Pass/Fail Graph or Pass/Fail Graph 2 > Select Data to Graph: "EOC OK" or "EOC Flavor" > Select Sort by: "EOC Blow Mold" to see information by the Blow Mold machine.



*Benefit to QA Studio Users:*

*Easily track; the Mold ID with the weights & the EOC Mold ID with the EOC Flavor*