



QA Studio: Print Labels for Sample Testing

December 2009



Feature: It has never been this *easy* to identify samples! All samples entered into QA Studio can have a label printed to place on the sample vial, Petrifilm, Petri dish and/or the finished product container. It is *easy* to find the sample and the test field where the result needs to be entered by simply scanning the barcode label.

This feature was in the spotlight in the July QA Studio Newsletter. It is such a great feature and it has been expanded so we wanted to let you know about it all again.

If you interested; *we can set up a 30 day trial* with a TLP 2844-Z Zebra Printer and the barcode software program: BarTender Enterprise Edition (which is needed to make the barcode labels in QA Studio). If you do not wish to use the feature after the trial period, then you will not need to purchase the printer or barcode software, simply return the printer to QA Studio in good working condition and the software trial period will automatically expire in 30 days. Why not give it a try! Please contact us for more details or questions on this offer.

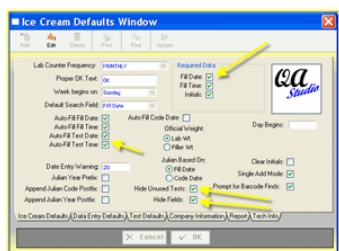
Highlight the samples in the main product window that need labels > Click on the Label button. And the labels print! There is also a label that can be printed for the End of Code samples in Fluid!



The label can be attached to the sample to be flavored at the end of the code date. When it is time to flavor the sample, scan the barcode and enter the flavor result. Flavoring and entering end of code information has never been this *easy*! The barcode labels to the right are only examples. Each plant decides what tests to perform, at which dilutions and which labels to print. Also, different products such as orange juice may be set up for different test such as OSA (OSA and other tests are available to print labels within QA Studio).

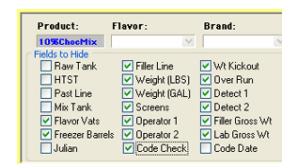


New Feature: Now in the Ice Cream program; you can hide information fields and/or test fields that you do not wish to use. In Ice Cream Defaults: Ice Cream Defaults tab > Hide Unused Tests. If this field is checked then any test field that does not have a specification set up will be hidden from view. To use Hide Fields: check the box > go to the Ice Cream Product Specs window > click on the main product > go to the Field Management tab > select which information fields you do not wish to see in the main product window when entering data.



Also, new in the Ice Cream Defaults window; ability to require important information such as Fill Date, Fill Time and Initials. And to help make data entry easier > ability to Auto-fill: Test Date, Test Time, Fill Date and Fill Time (you may change these dates and times during data entry as needed).

Field Management: In the Ice Cream and Culture Product Specs window: The Field Management tab will only be seen when highlighting a main parent product. The fields can only be hidden by product (not product and brand or product and flavor). Field Management can be extremely helpful. For example; for a product such as 10%mix, you can have the Raw Tank, and the HTST fields showing for traceability, but can hide, for example, the metal detector checks. For the finished product 10%IC, you could hide the Raw Tank and HTST and show the filler checks. Customize the fields to the product that is being tested. If you would like to see all the field choices, go to Ice Cream Defaults > Uncheck the Hide Fields. To turn it back on go to Ice Cream Defaults and check the Hide Fields.



Benefit to QA Studio User: Continual enhancement of QA Studio to help improve *efficiency*!

Workshops offered by Randolph Associates, Inc.
Implementing SQF 2000 Systems
DATE: January 27 - 28, 2010
LOCATION- Murfreesboro, TN

Workshops offered by Randolph Associates, Inc.
Dairy Technology Workshop
DATE: March, 2010
LOCATION- Birmingham, AL