



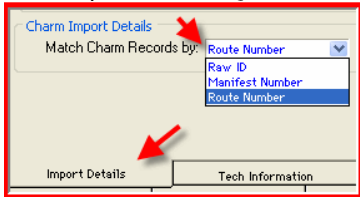
September 2008

### Charm SL Import Set Up

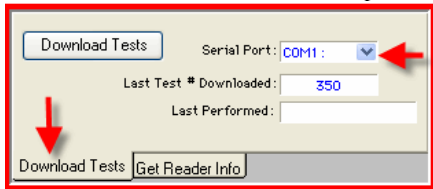
### Charm SL Routine Importing of Results

Previously QA Studio used Hyper Terminal to interface with Charm.

1. Go to Raw Program Menu > Raw Defaults > Import Details tab > Choose which ID is used to enter into the Charm reader. This will let QA Studio know how to match the test results with the sample entered into QA Studio.



To import data in the most efficient manner in QA Studio; a connection cable and a splitter should be purchased from either QA Studio or from Charm directly. Order description – “Com-Pak” and “Com-Splitter” Once the splitter and cable are attached, the data will be sent to both the printer and the computer.

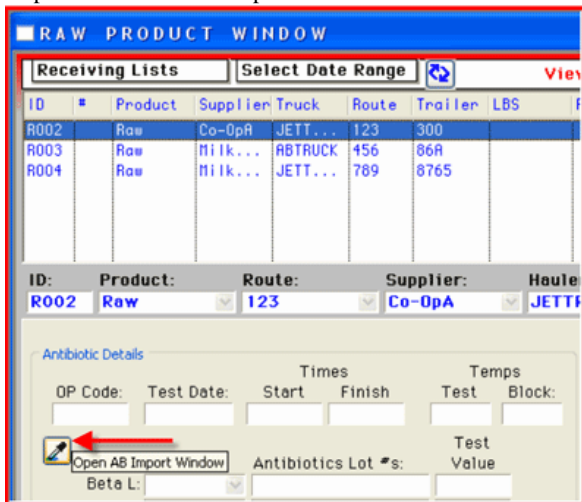


2. Install the splitter cable, and set up the correct port in QA Studio. Go to > Raw Program Menu > Import/Export > Charm Reader Import > Download Test Tab > Select the Serial Port.

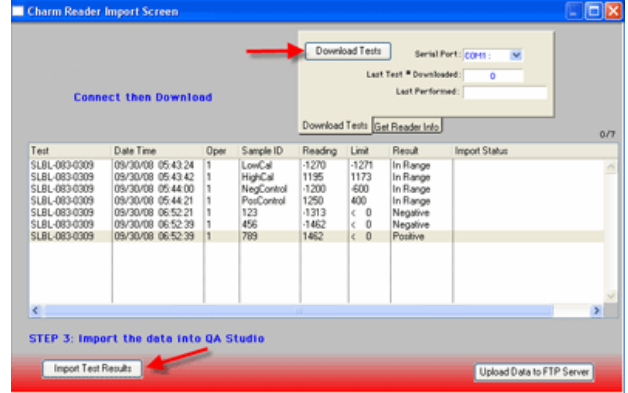
3. On the Get Reader Info tab > Click Get Info. The field will fill with the number of the first test and the date, the number of the last test and date and the next number in the sequence. You then select the initial number to start with on the initial import (enter in “Last Test # Downloaded”). This only needs to be done once on the initial import.



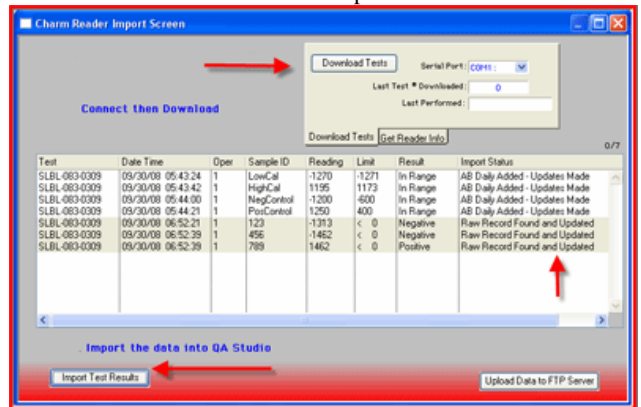
When importing results from the reader, QA Studio will start on the next number in the sequence. Once you have successfully completed the set up, you can easily import the data from this point forward.



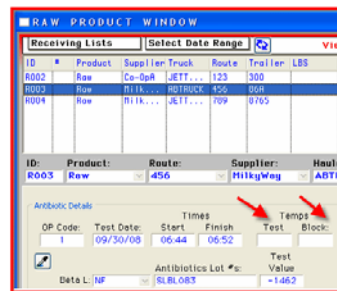
1. Click the button to the Charm Reader Import window in either the Daily Antibiotic Check window or in the Raw Product window. Once in the Charm Reader Import window > Click [Download Tests](#).



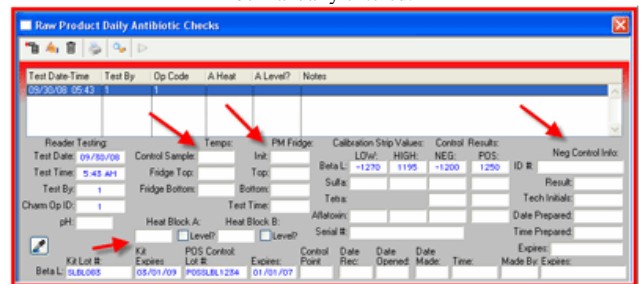
2. Next Click [Import Test Results](#) – The Import Status column will tell you if the result was imported.



3. Test results are imported and can be seen in the Raw Product window. Temperature of the sample and heat block will not be imported since they are not recorded in the reader. That information will need to be manually entered.



Daily Antibiotic Check results will also be imported. The AM and PM refrigerator checks, the heat block checks and other information not included in the reader will need to be manually entered.



There is a small button in both the Daily Antibiotic Window and in the Raw Product window. Click the button when you are ready to import.



209 668-0600

www.qastudio.com