



October 2008

Raw Program – Barcode Labels for Samples

Barcode labels can be printed within QA Studio. The labels can be used to identify samples and Petrifilm. They can be used with or without a 3M Petrifilm plate reader. *Note: An additional designated barcode printing program and a specific label printer will be needed for this feature.*

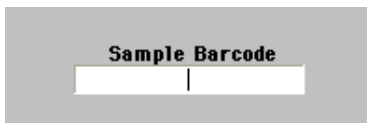
09/04 00:00 - R009 - RAW



09/04 00:00 - R010 - RAW



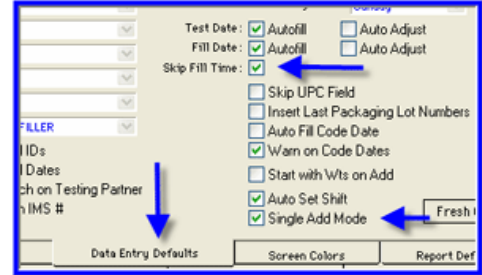
If you are using barcode labels without a 3M Petrifilm reader you can click FIND in the Raw main window and scan the label in the barcode field and QA Studio will find that unique sample and the proper field for the test result.



Please contact QA Studio if you are interested in using this feature.

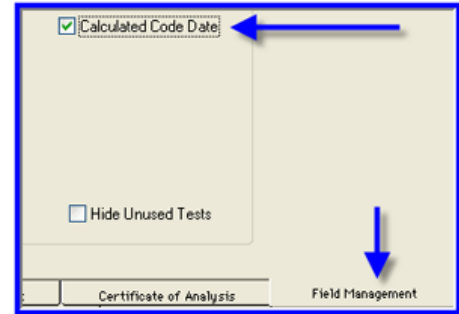
Fluid Program – New Defaults in Fluid Program

1. Fluid Program Menu > Fluid Defaults > Data Entry Defaults

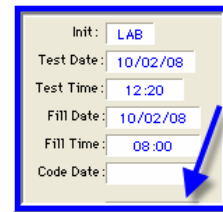


- Auto fill the fill date to the current date separately from the fill time. Benefit: one less field to enter if typically entering samples right off the packaging line.
- Single Add Mode: Once OK is clicked after being in the ADD mode, QA Studio will end the process and not go back to the ADD mode for the next sample. Benefit: Do not have to CANCEL the ADD mode when one sample being entered at a time.

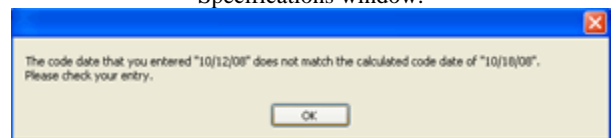
2. Fluid Program Menu > Fluid Defaults > Field Management



- Hide the calculated Code Date: Calculated code date will be hidden so QA Studio user will have to make sure and visually check the container before entering the code date.



QA Studio will still warn (if set up in the defaults to warn) if the code date is different than the expected as compared to the code set up in the Fluid Product Specifications window.



Benefit to QA Studio users; to have the ability to set options that fit your particular testing needs and make entering data more efficient and accurate.