



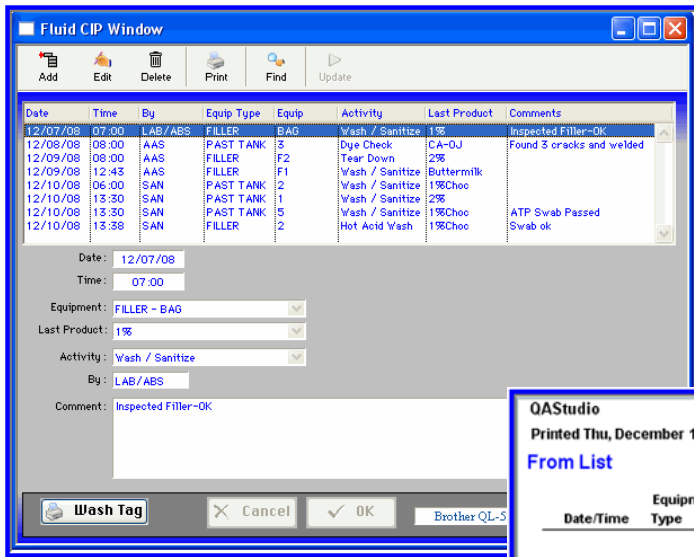
Fluid Program – Print Wash Tags



Wash labels can be printed within QA Studio and attached to tags and placed on tanks. Placing the wash tags on the pasteurized tanks can help identified the tank as having been washed and sanitized and the tank is ready for the pasteurizer. The pasteurizer can then write the date and time when the current/new product entered the tank on the tag. The lab or designated person can check the product in the pasteurized tank and then initial that they have checked and "Released" the tank. The filler operators can then check the tag before pulling out of the tank to package the product.

The "Last Product" can be identified by the CIP person so if there is extra testing that needs to be performed then the lab will be aware before releasing the tank. For example; if the last product was chocolate milk, extra testing might be performed to make sure there is no chocolate residue remaining. *Please note: This procedure and example are for demonstration purposes only to show how this new feature might be helpful, each facility determines their own SSOPs.*

To use this feature you will need a small label printer. For this example we have used a Brother QL-570 (same label printer used to print the raw tanker wash tags) The Brother printer set up: Format: Normal, Width: 2 3/7", Length: 3.54, Feed .12, Orientation: Portrait, Quality: Priority to Speed, Resolution .300 x .300 dpi.



To enter the CIP data in QA Studio: Go to Fluid Program Menu > Fluid CIP window.

Click ADD, enter the details and click OK. The Equipment field contains the pasteurized tanks and the fillers from the Fluid Support Lists. In the field for "Activity" you have several choices including: Wash / Sanitize, Hot Acid Wash, Tear Down, Dye Check and Sanitize only (for re-sanitizing equipment). Highlight the record after entering and click "Wash Tag" and a label will be printed from the details. The label can then be placed on a tag and the tag can be placed on the equipment.

There is a FIND icon in the Fluid CIP window. The FIND icon can be clicked to perform a search for any date range, for any type of equipment and/or for any type of activity. There is a PRINT icon in the Fluid CIP window. The PRINT icon will print the details from the data in the CIP window. The report will sort the pasteurized tanks and fillers separately. The tanks and fillers will be sorted in alpha/numeric order.

QAStudio		FLUID PRODUCT CIP Log				Tue 11/18/08 00:00 thru Thu 12/18/08 23:59		Page: 1
Printed Thu, December 18, 2008 @ 16:14								
From List								
Date/Time	Equipment Type	Equipment	By:	Activity	Last Product	Comments		
FILLER								
12/10/08 13:38	FILLER	2	SAN	Hot Acid Wash	1%Choc	Swab ok		
12/07/08 07:00	FILLER	BAG	LAB/ABS	Wash / Sanitize	1%	Inspected Filler-OK		
12/09/08 12:43	FILLER	F1	AAS	Wash / Sanitize	Buttermilk			
12/09/08 08:00	FILLER	F2	AAS	Tear Down	2%			
PAST TANK								
12/10/08 13:30	PAST TANK	1	SAN	Wash / Sanitize	2%			
12/10/08 06:00	PAST TANK	2	SAN	Wash / Sanitize	1%Choc			
12/08/08 08:00	PAST TANK	3	AAS	Dye Check	CA-OJ	Found 3 cracks and welded		
12/10/08 13:30	PAST TANK	5	SAN	Wash / Sanitize	1%Choc	ATP Swab Passed		

Benefit to QA Studio Users: Document washes and other important activities involving the pasteurized tanks and fillers. Easily see details to compare with QA Studio finished product reports. Easily find details on specific equipment.