



New Feature!

The Raw Program: In the Large Window you can print details of the wash.

Benefits:

Neatly, efficiently & securely document wash & seals on wash tags.

- To use this feature you will need a small label printer. For this example we have used a Brother QL-570. The Brother printer set up: Format: Normal, Width: 2 3/7", Length: 3.54, Feed .12, Orientation: Portrait, Quality: Priority to Speed, Resolution .300 x .300 dpi.



- Have QA Studio and the label printer set up in a convenient accessible location. Add the wash details on the CIP tab. Add the seals on the seals tab under Outgoing seals. *If you are using seals in a numerical sequential order, you can add the complete number for the first seal then the last 1 or 2 digits for the next seal, QA Studio will automatically fill in the complete number.*



- Click the Wash Tag button on the CIP tab and print the wash details and the seal information and place on the wash tag.



New Feature!

The Raw, Fluid & Culture Programs: Upon opening the main product windows, the windows are automatically populated with the data from "Today". QA Studio will also automatically go to the last sample to give you the latest data just by opening the main window.

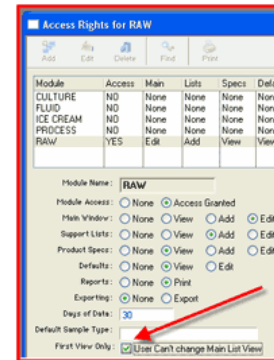


Benefits:

Efficiently see "Today's" data immediately upon opening the product window.

New Feature!

Now in the Raw program you can lock the user to only the first view. Go to the Users window, select the user and click Access. Click edit and click the First View Only to use this feature. *Note: users can also be blocked from having access to specific tabs in the Access rights window.*



Benefits:

Enhanced security and limits the views available to users.

New Feature!

The Fluid Program: Set the sample type in defaults: Go to the Fluid Program Menu > Product Specifications > Highlight a product > Open the Weights Update Screen > enter a default sample type. For this example: An "In-house" (brand) tank sample of 1% (Product) milk is highlighted. "Tank" was entered as the container and "cup" as the size (tank samples and syringe samples can be set up in a number of ways). The sample type is set to "Tank". *Also, using this example; the UPC code can be entered as "1". Then the user only needs to add "1" in the UPC field when entering a 1% tank sample and many details will auto-fill.*

Benefits:

Increased accuracy and improved efficiency when adding data.