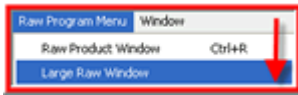




March 2008

*New!*

Raw Program: A Larger Main Window. To view and use the larger window > Raw Program Menu > Large Raw Window.



To maximize the Raw Main Window > Click the Maximize button in the top right hand corner of the window.



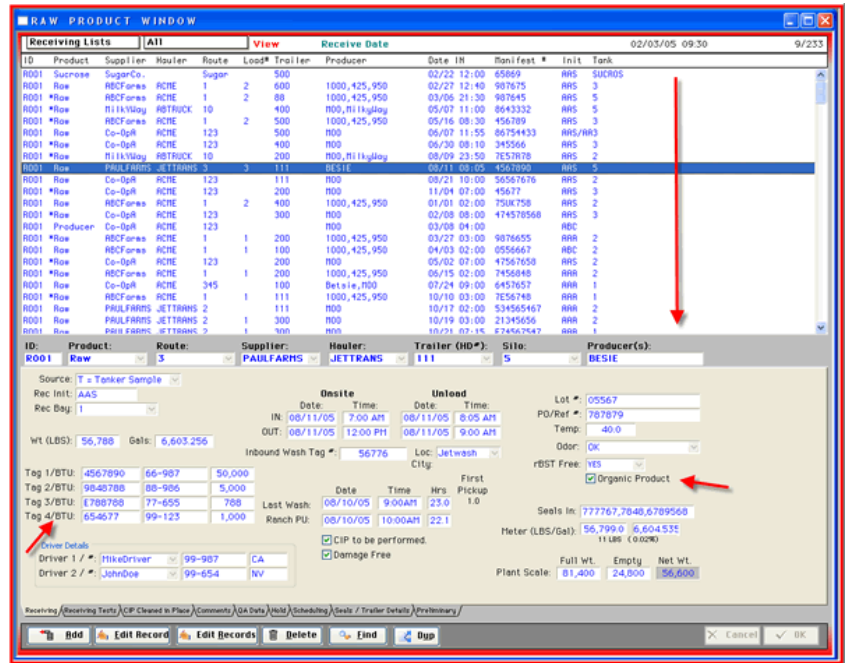
To stretch the Raw Main Window > Click the right side edge or the corner or the bottom edge and hold the mouse down and stretch.



Benefits:

Data entry easier, easier to see fields (Font size has also been enlarged).

Screen size resolution is now 1024 x 768 (SVGA Standard). If you go to Control Panel > Display > Settings > Set the Screen Resolution to 1024 x 768 (if not already the setting) and QA Studio will look fantastic!

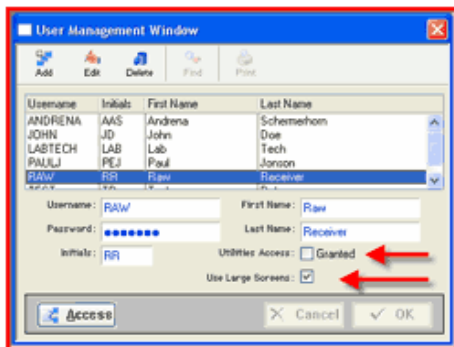


Other new items: We have added Tag #4 along with the corresponding BTU/FIPS number and a check box for identifying if the incoming product is Organic.

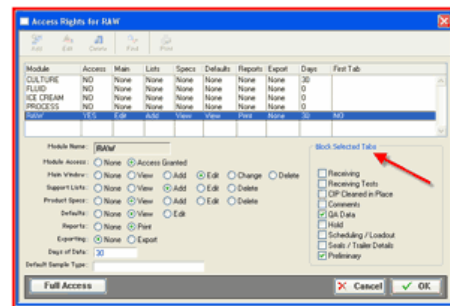
We would like everyone to check out the new large raw window. Please give us feedback. Our goal is to make all the main product windows this size.

*New!*

User Management Window > Access Rights for Each Module: The ability to block access to specific tabs in the main window by each specific user.



*New!*



User Management Window: The ability to grant access to the Utilities in the QA Studio Main Menu and the ability to set the large window as the default by each user.



Authorized Dealer of QA Studio