



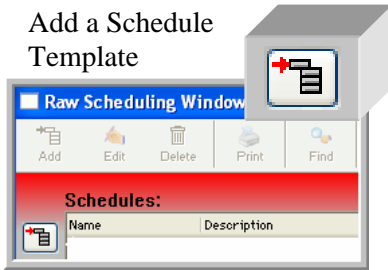
**Start the New Year with these Fabulous New Features...**

**Raw Program – New Raw Schedule Window**

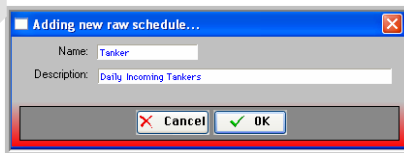
This feature can be used to schedule tankers, silos, inventory samples, producer samples, and more.

- ✓ Set up > Raw Program Menu > Raw Schedule Window
- ✓ Make a Schedule > Click ADD a Schedule > Complete Name & Description > Click OK
- ✓ Add Item Details > Click ADD Schedule Items > Enter Details > Click OK
- ✓ Add More Items to Schedule > Highlight Item in Schedule Item View > Click Duplicate
- ✓ To Edit Item Details > Highlight an item and double click or Highlight & Click Edit
- ✓ Generate a Schedule > Highlight the Schedule > Click Generate Schedule > Enter Date > Generate

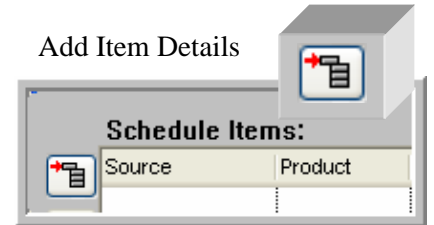
Add a Schedule Template



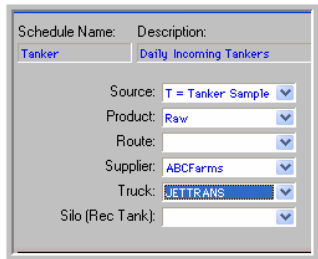
Enter Name & Description



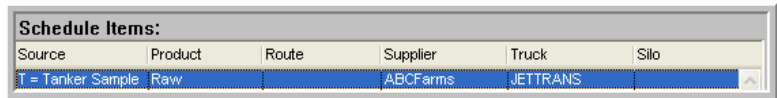
Add Item Details



Enter Item Details



Highlight Item to Duplicate or to Edit



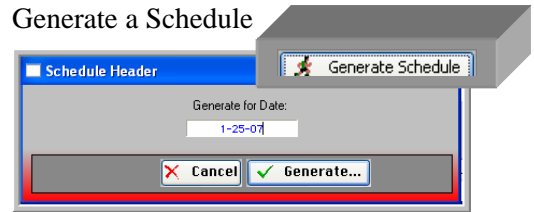
Duplicate



Edit



Generate a Schedule



Several different schedules can be generated and each schedule can be updated as often as needed.

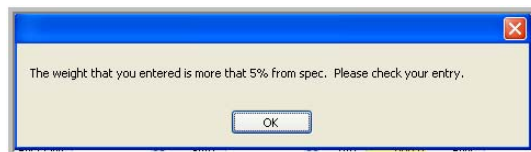
**Fluid Program – New Alert Box for Weight Field**

This feature can help alert the user to possible incorrect entries.

- ✓ Set up the Percent to Alert User On > Fluid Defaults > Data Entry Defaults > Set Percent



If entering a **WEIGHT** outside of the designated percent, the user will be alerted.



Note: All Out of Spec results entered are highlighted also.

