

## Raw Program –EZ Format

### Raw program: %TA and Freezing Point EZ Format

New Feature for easier data entry!  
 %TA can be entered with or without the decimal point. Enter .15 or 15.  
**QA Studio will format 15 to a .15.**  
 Freezing Point can be entered with or without the – sign and the decimal.  
**QA Studio will format 541 to -.541.**

## Raw Program - FIND

### Raw program – Find Manifest, PO, Lot#

Now you can FIND a manifest or raw milk tag #, lot # or PO # without entering a date range:

- >Click Find
- >Enter # in field
- >Click OK

Tag 1 /BTU: |

PO/Ref #:

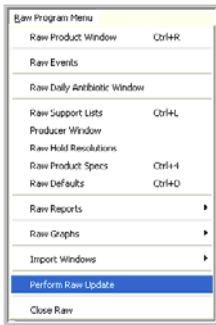
Lot #:

## Raw Program – Ropy: Changes and Additions

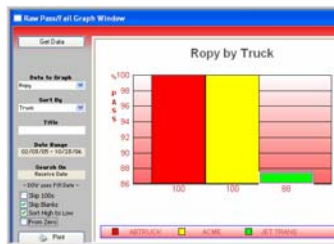
### Raw program: New Ropy Reports & Ropy added to Pass/Fail Graphs

After downloading and installing the latest version of QA Studio:  
 You will need to go to the *Raw Program Menu* > *Perform Raw Update*. With the latest version you will have Ropy Graphs and additional Ropy Reports which can be found under *Raw* > *Reports* > *Micro*.

Perform Raw Update



Ropy in Pass/Fail Graphs

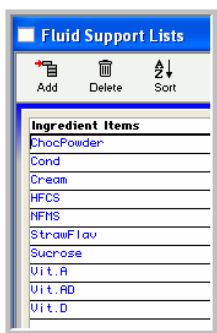


New Ropy Reports

By Route w/Ropy
  Ropy Report
  Ropy / HR3 Report
  Ropy with Manifest

## Fluid Program – Ingredient Information

### Fluid program: Ingredients added to Fluid Support Lists & now in Main Window



For added traceability; we have added *Ingredients* to the *Support Lists* and to the *Fluid Main Window*. Choose the *Ingredient* from your *Support List* items and add the lot number.

Lot Numbers and Packaging	Product	Brand	Container	Size
Lot #1: 58R596785	ChocoMilk	ABCDairy	PLASTIC	GAL
Lot #2: UP0867989	Sucrose			
Lot #3:				
Lot #4:				
Lot #5:				

Authorized Dealer



(800) 649-0325